

# Building Wireless Community

By:

Engr. Joseph Ronald Cañedo

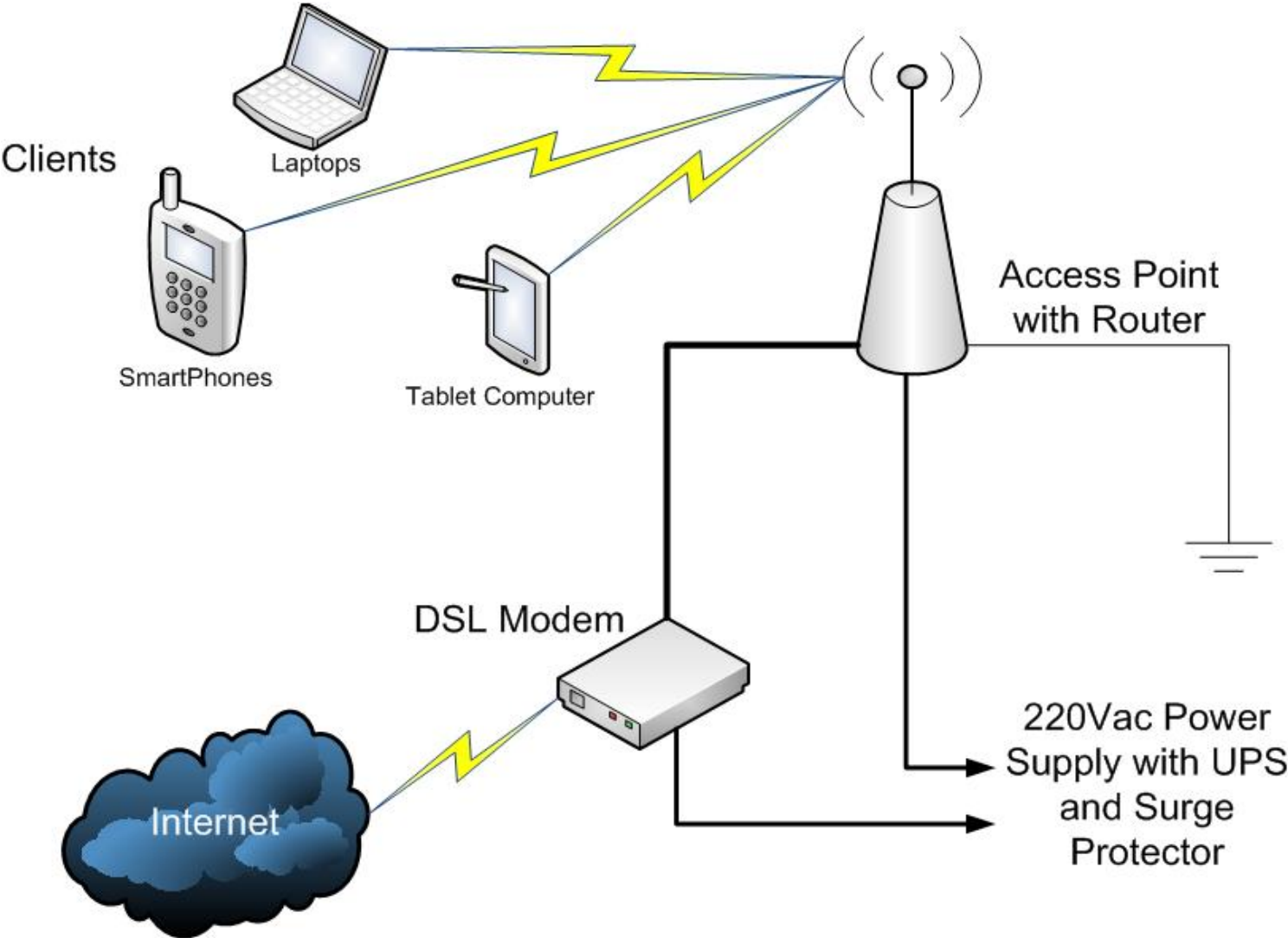
# Planning Phases

1. Who are the clients?
2. Where are the places to establish the Access Points?
3. How many clients to be served per Access Point?
4. What are the legal impediments? If any.
5. How much will be the cost?

# Planning Phases

1. Who are the clients?
  - Travelers, students, businessman
2. Where are the places to establish the Access Points?
  - Public places like: Terminals, Airports, Parks, all government offices
3. How many clients to be served per Access Point?
  - 11 – 200 clients
4. What are the legal impediments? If any.
  - Business conflicts with telecom providers
5. How much will be the cost?
  - Millions of pesos (sources of funds)

# Technical Plans



# Cell Planning

Min. Distance = 3.2 km

Max. Distance = 16 km

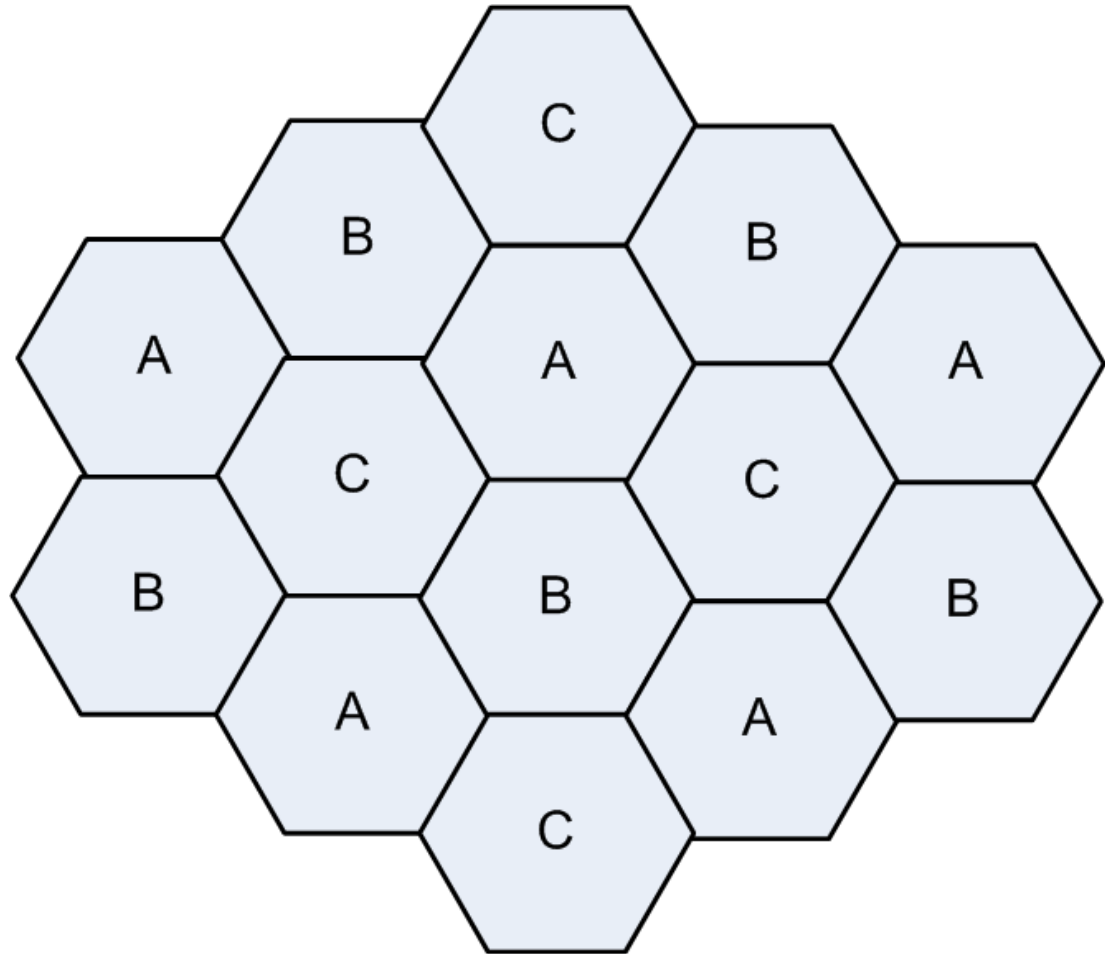
IEEE802.11 a/b/g/n

Frequencies:

- 2.4 GHz
- 5.7 GHz

Channel Capacity

- 11 – 200 channels



# Products

- Motorola Canopy and its systems
- Linksys Wireless Systems
- Cisco Aironet Wireless Systems

# Motorola Canopy



Cluster Access  
Points Radios

GPS



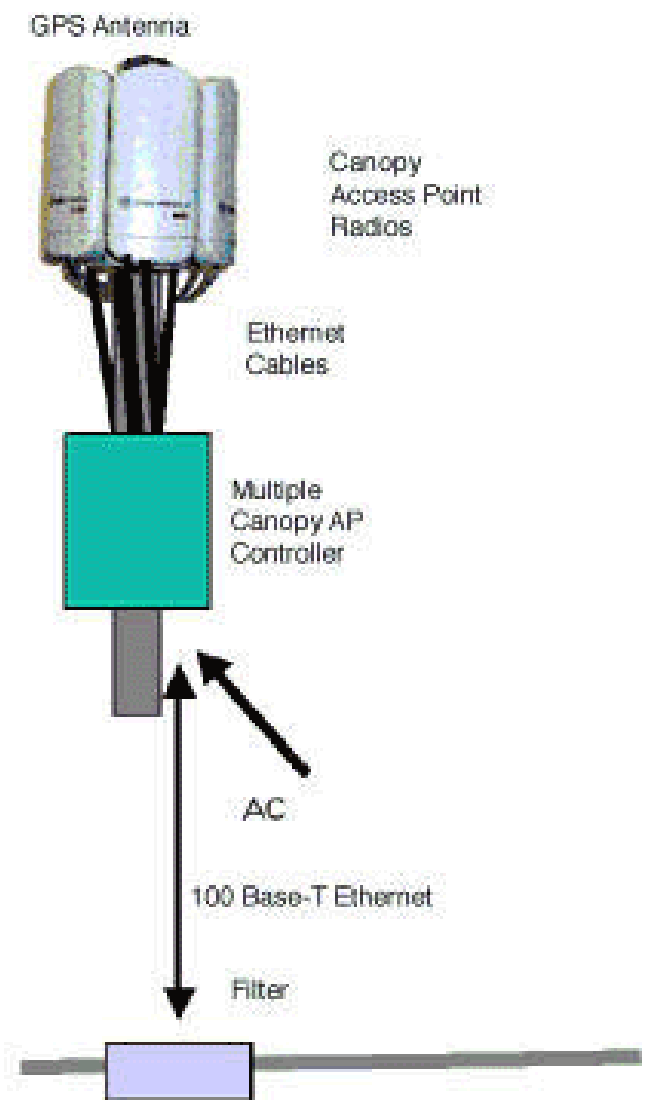
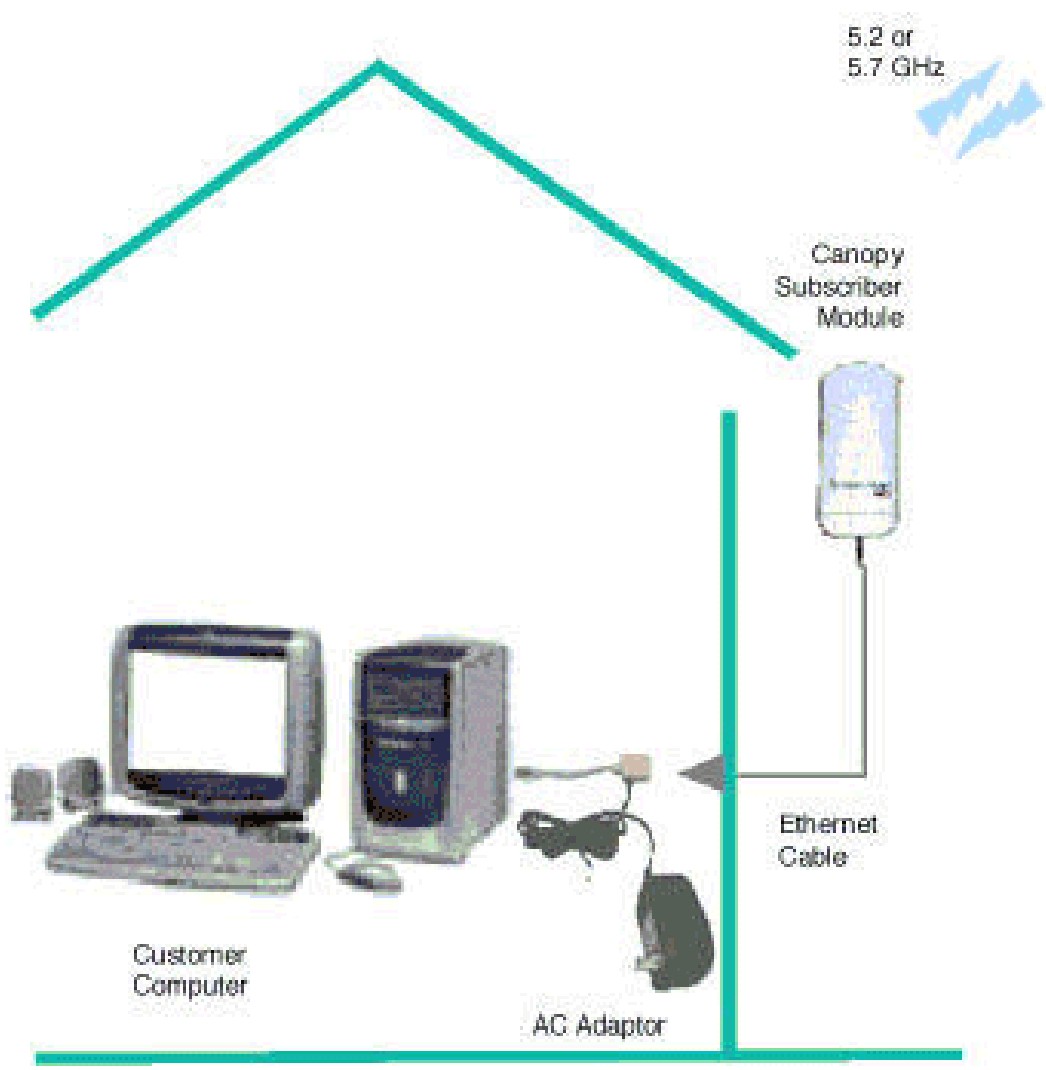
Backhaul



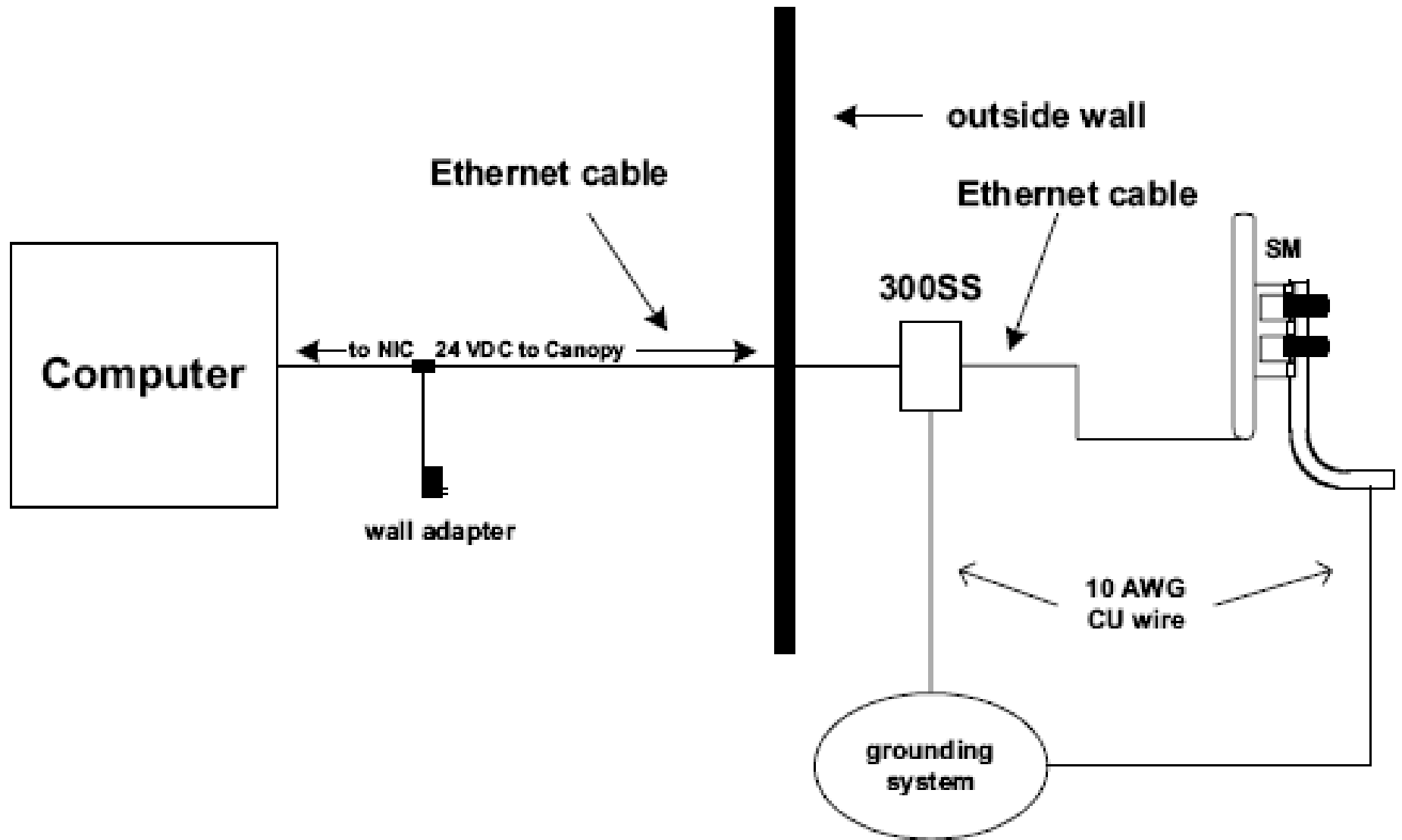
Cluster  
Management  
Module



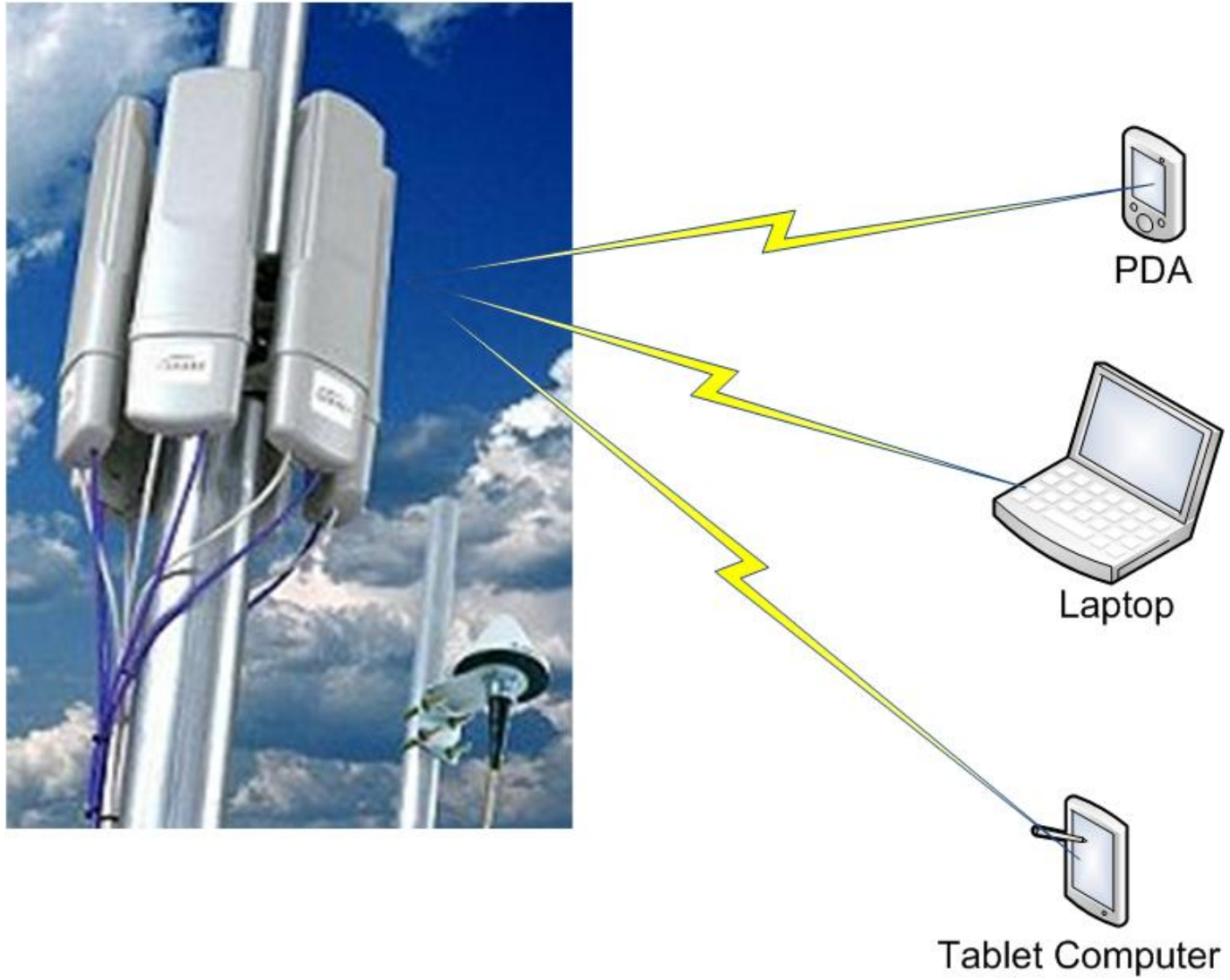
Subscriber  
Module



# Clients Setups (Residential)



# Clients Setups (Mobile)



# Project Cost

- Initial Cost: 20 – 100 million pesos (more or less 100 APs)
- Monthly Cost: 16Mbps average speeds at Php 70, 000.00
- Labor Cost: 5 percent of the total project cost
- Miscellaneous Cost

# Recommendation

- Needs further studies and thorough evaluations of the PROs and CONs of the project.

